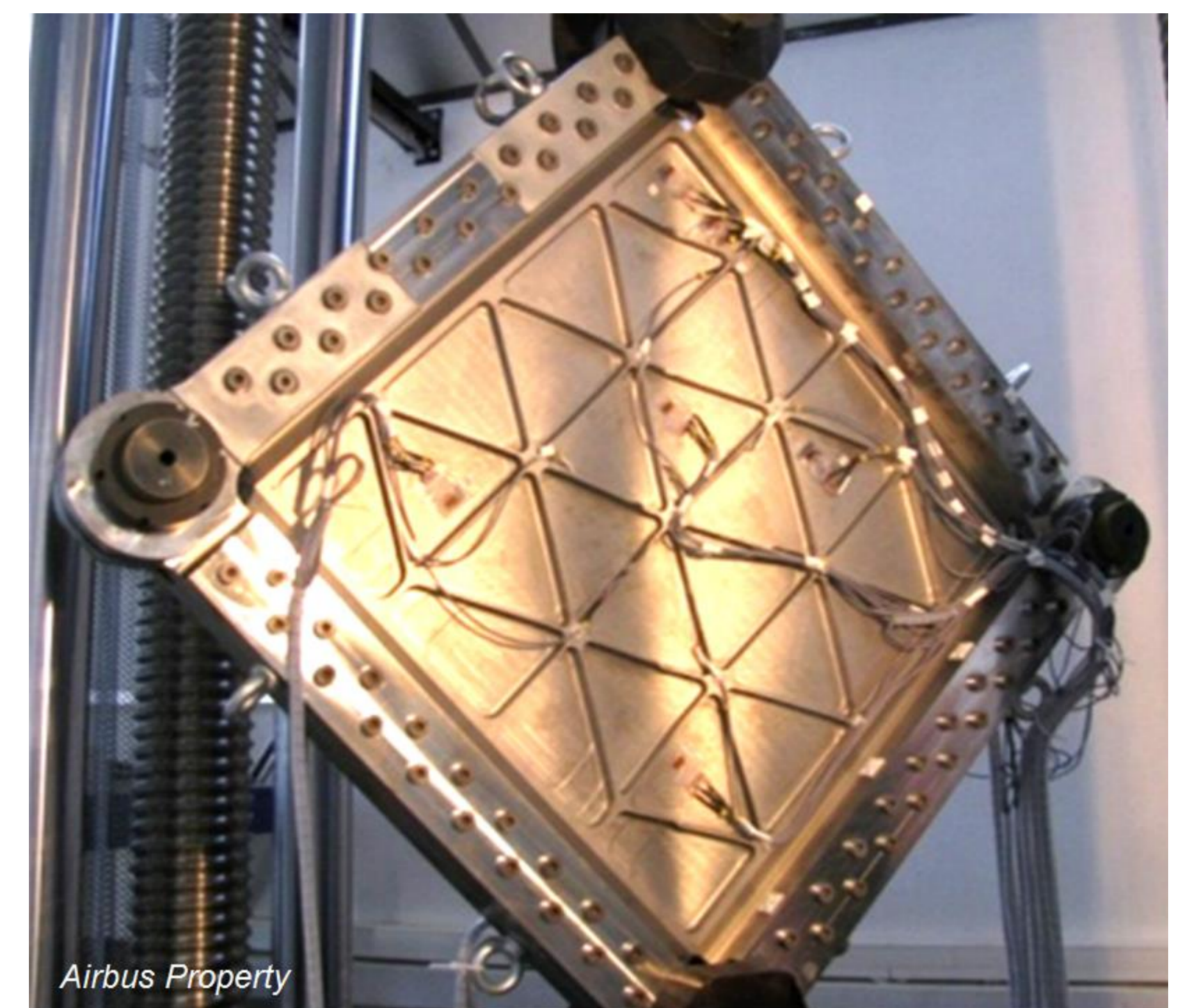


Keywords: Structural Analysis, F.E. Modelling, Mechanical Tests, Residual Stress

Contact

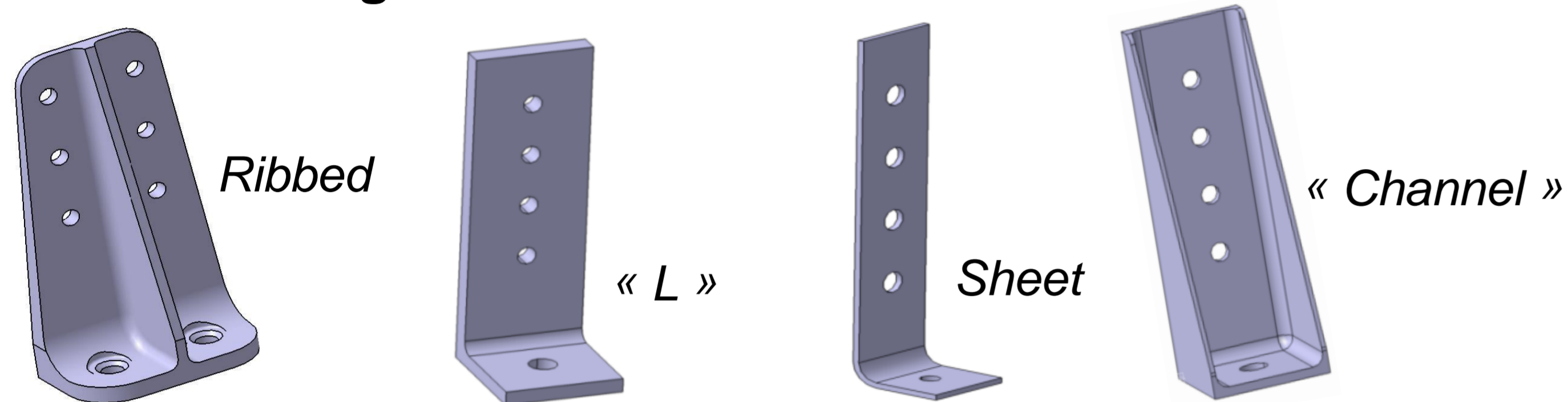
Eng. Philippe GUY

- philippe.guy@icam.fr
- Mechanical Engineering Department
Icam, Toulouse Campus
- https://www.researchgate.net/profile/Philippe_Guy3

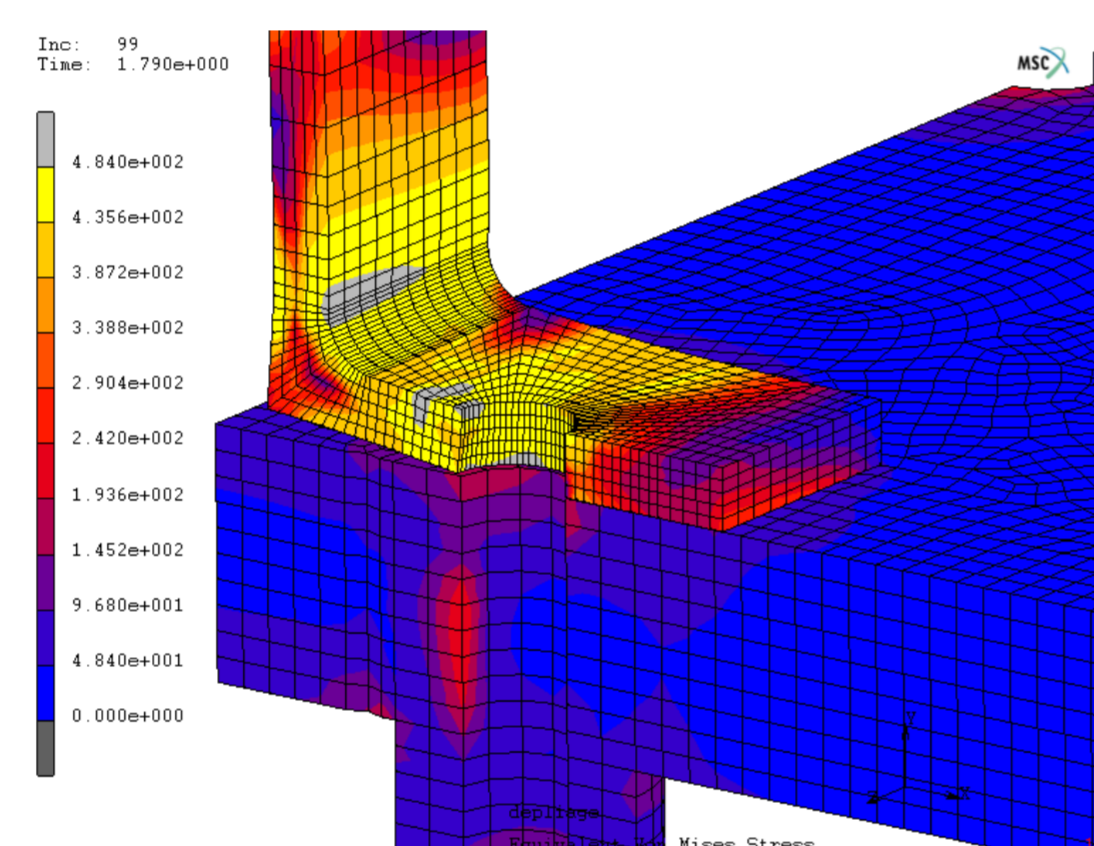


Shear Buckling Test of a Titanium Isogrid Panel (2 000 kN)

Tension - Fittings :



Failure Tests



F.E. Modelling

Applied Research Purpose

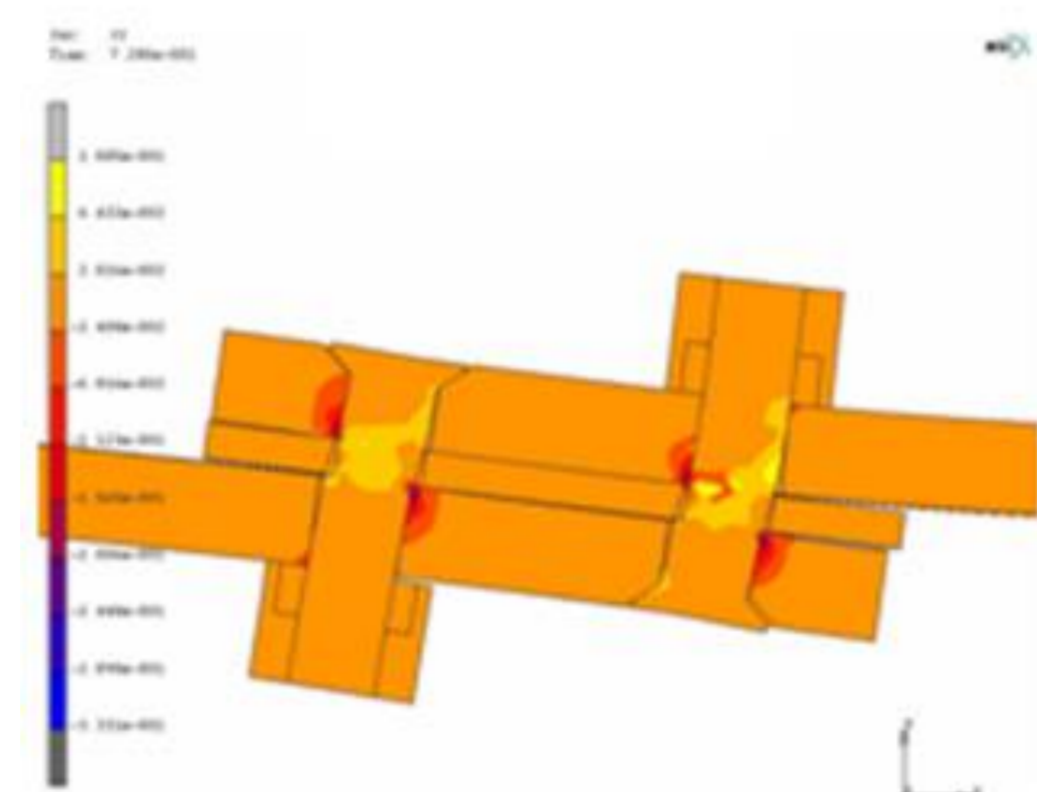
Analytical, Computational and Experimental Analyses of Structural Behaviour:

- Aircraft Parts : Tension-Fittings, Bolted and Riveted Lap-Joints, Isogrid Stiffened Panels
- Slippage Detection in a Bolted Joint due to Temperature Change (Spacecraft)
- Residual Stress Measurements
- Development of Analytical Methods in Correlation with Tests Results
- Fracture Toughness
- Thermo-Elastic Distortion of Sandwich Panels

Bolted and Riveted Lap-Joints :

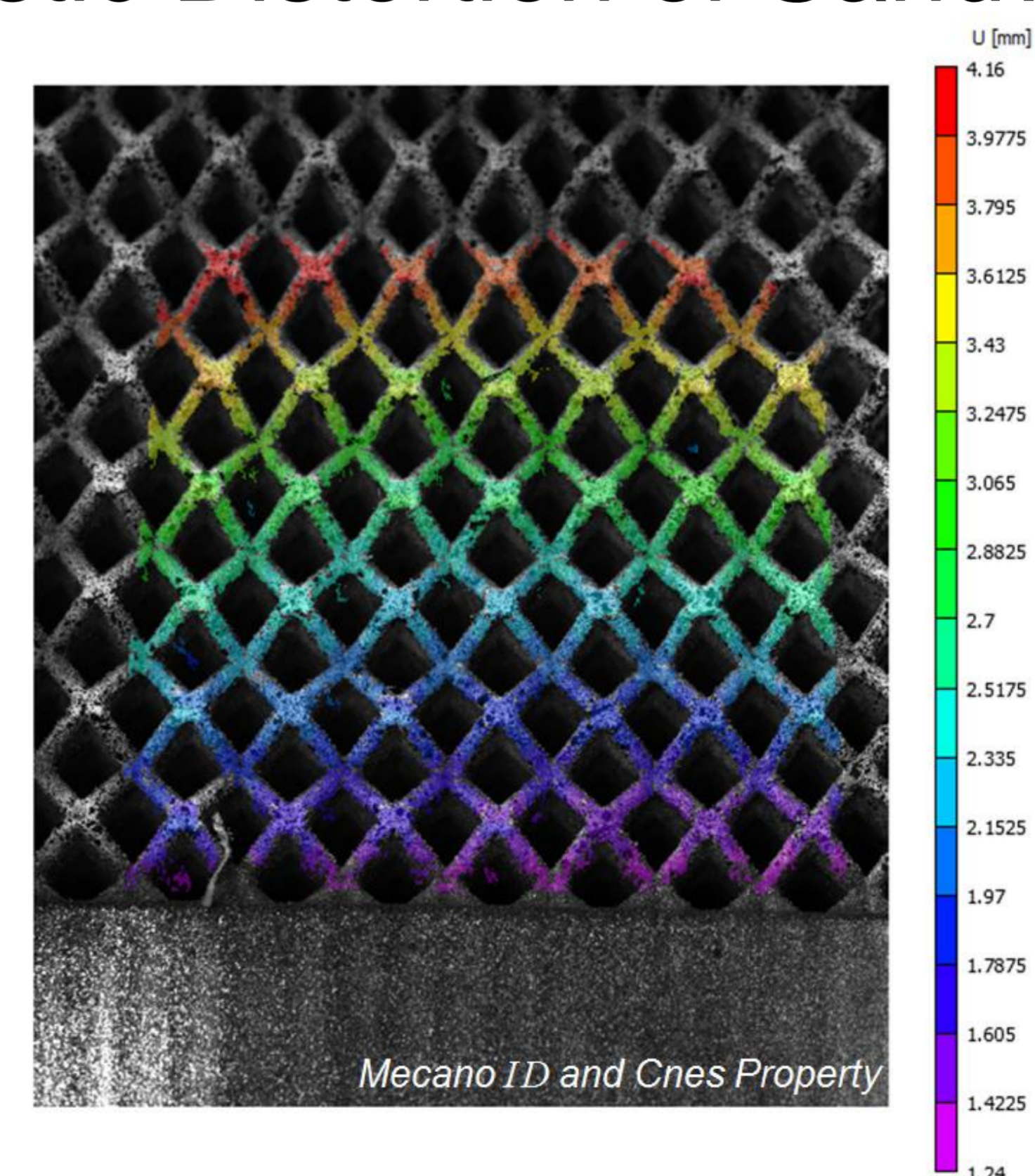


Shim Influence



Applied Skills

- Strength and Vibration of Structures
- Linear and Non linear F.E. Simulations (Statics, Buckling, Dynamics)
- Mechanical Testing
- Fatigue and Fracture Mechanics
- Thermo-Mechanics
- Strength of Materials & Elasticity
- Laminated Composites



Digital Image Correlation Method for Measuring ALM Titanium Lattice Structure Deformation