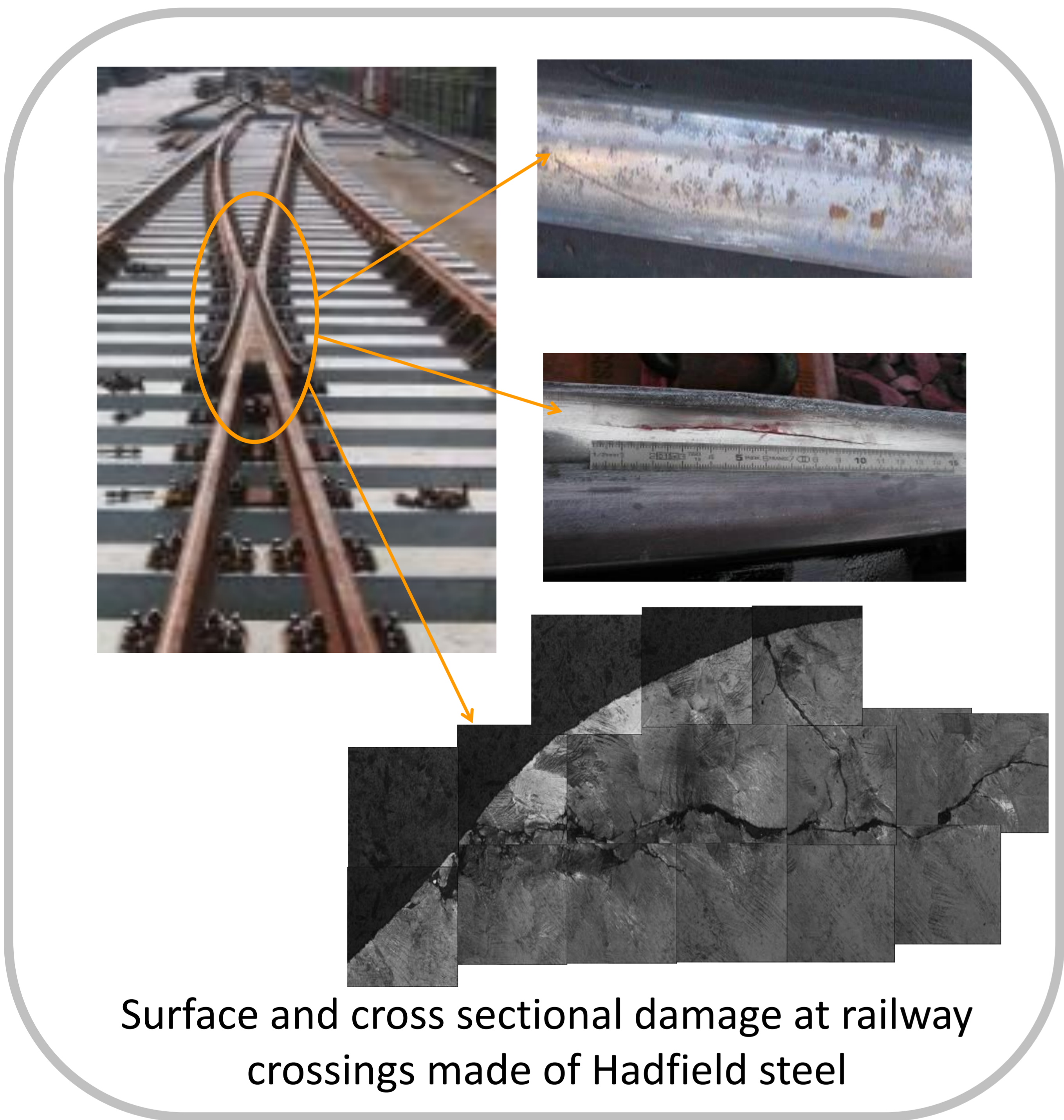
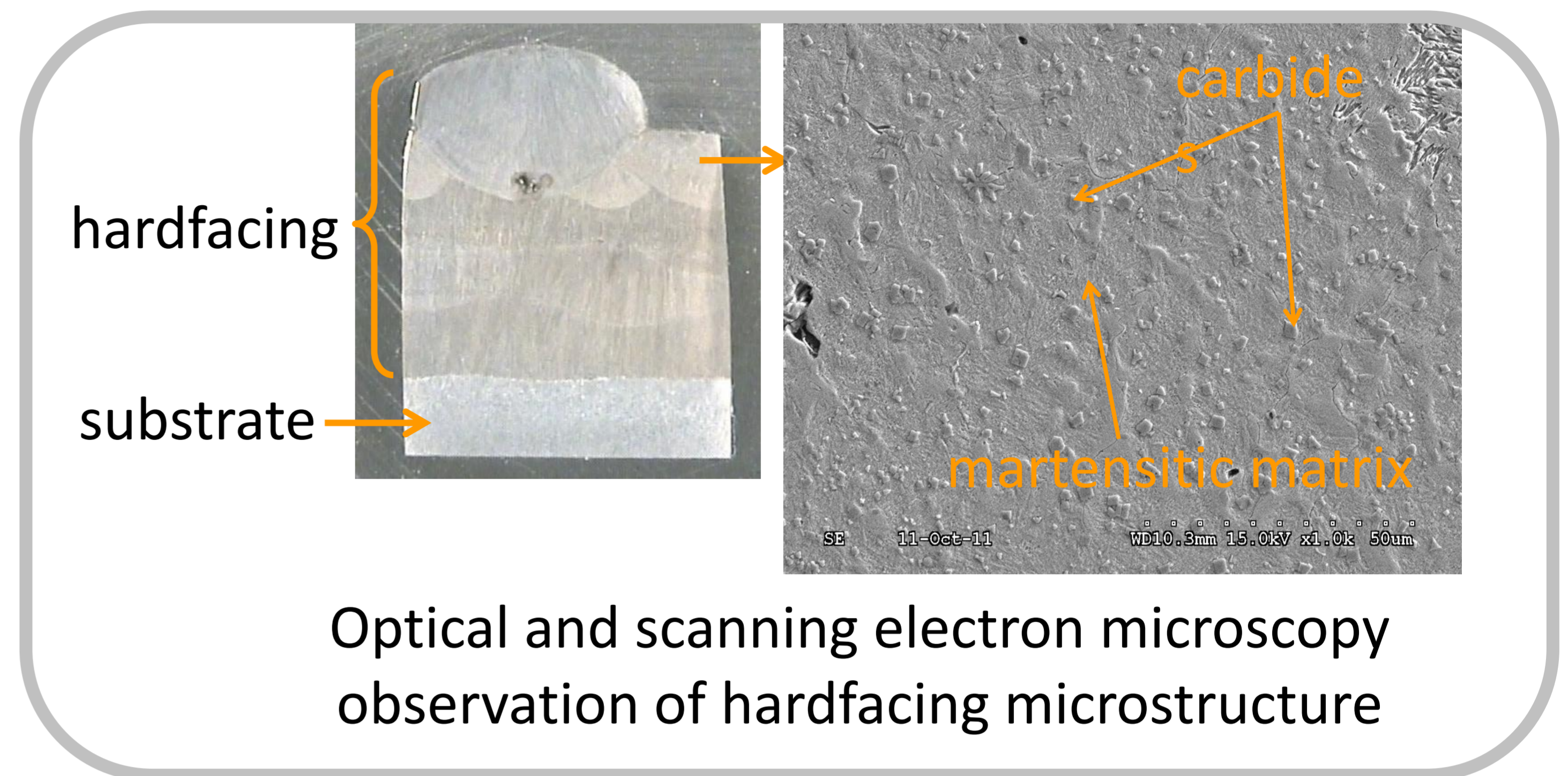


**Keywords:** Wear, Residual Stress, Surface Treatment, Microstructure, Tribology

## Contact

### ○ Dr. Anne Mouftiez

- [anne.mouftiez@icam.fr](mailto:anne.mouftiez@icam.fr)
- [https://www.researchgate.net/profile/Anne\\_Mouftiez](https://www.researchgate.net/profile/Anne_Mouftiez)



## Applied Research Purpose

Improvement of service life of parts submitted to cyclic or contact loads, such as:

- Railway crossings
- Cement grinding mills
- Electrical devices
- Cryogenic equipment for unloading liquefied gas tankers
- Aerospace bearings

## Skills applied

- Residual stress evaluation
- Microstructure characterization
- Fracture and damage analysis
- Specific and combined testing device development
- Manufacturing process / Microstructure / Service properties relationship analysis

